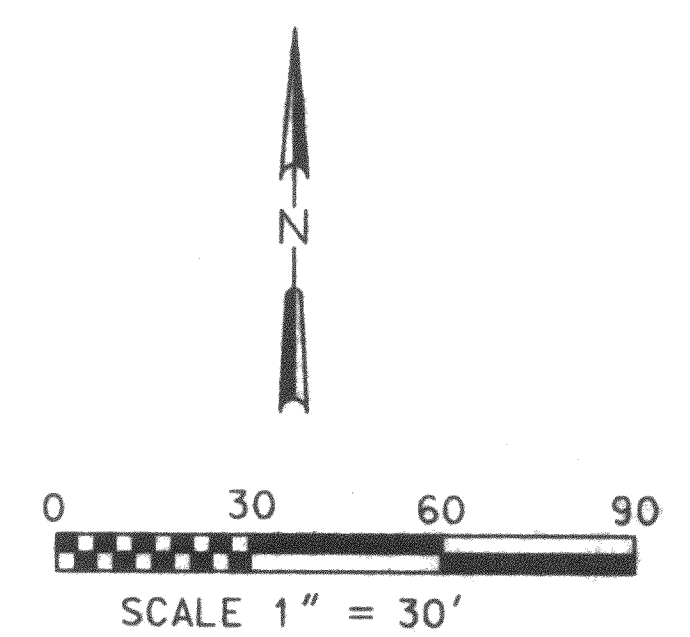
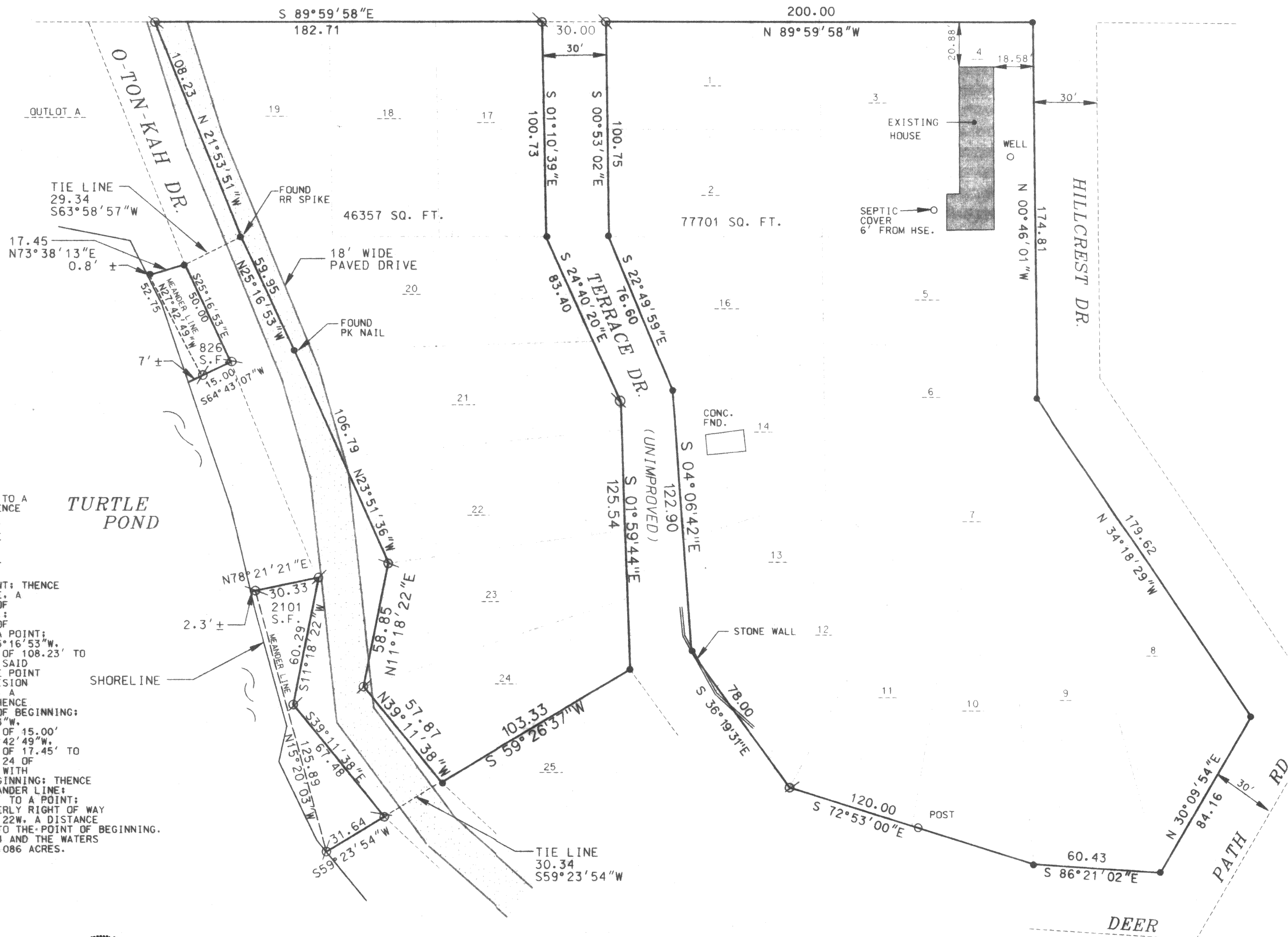


BEACH ROAD



LEGEND

- IRON PIPE FOUND
- 1" IRON PIPE SET

LEGAL DESCRIPTION:

BEING LOTS 1 THROUGH 14, AND LOTS 16 THROUGH 24 AND EXTENSIONS OF LOTS 20, 23 AND 24 TO THE WATERS EDGE OF O-TON-KAH, A SUBDIVISION IN PART OF THE NW 1/4 OF SECTION 10, TOWNSHIP 4 NORTH, RANGE 18 EAST, TOWN OF EAST TROY, WALWORTH COUNTY, WISCONSIN BEING MORE COMPLETELY DESCRIBED AS FOLLOWS: BEGINNING AT THE NE CORNER OF LOT 4 OF SAID SUBDIVISION; THENCE WITH THE SOUTHERLY RIGHT OF WAY OF BEACH ROAD N 89°59'58"W, A DISTANCE OF 200.00' TO A POINT; THENCE LEAVING SAID RIGHT OF WAY S 00°53'02"E, A DISTANCE OF 100.75' TO A POINT; THENCE S 22°49'59"E, A DISTANCE OF 76.60' TO A POINT; THENCE S 04°06'42"E, A DISTANCE OF 122.90' TO A POINT; THENCE S 36°19'31"E, A DISTANCE OF 120.00' TO A POINT; THENCE S 08°21'02"E, A DISTANCE OF 60.43' TO A POINT ON THE NORTHERLY RIGHT OF WAY OF DEER PATH RD.; THENCE WITH SAID NORTHERLY RIGHT OF WAY N 30°09'54"E, A DISTANCE OF 84.16' TO A POINT ON THE WESTERLY RIGHT OF WAY OF HILLCREST DR.; THENCE WITH SAID WESTERLY RIGHT OF WAY N 34°18'29"W, A DISTANCE OF 179.62' TO A POINT; THENCE N 00°46'01"W, A DISTANCE OF 174.81' TO THE POINT OF BEGINNING; ALSO BEGINNING AT THE NE CORNER OF LOT 17 OF SAID SUBDIVISION; THENCE S 01°10'39"E, A DISTANCE OF 100.73' TO A POINT; THENCE S 24°40'20"E, A DISTANCE OF 83.40' TO A POINT; THENCE S 01°59'44"E, A DISTANCE OF 125.54' TO A POINT; THENCE S 04°06'42"E, A DISTANCE OF 122.90' TO A POINT; THENCE S 36°19'31"E, A DISTANCE OF 120.00' TO A POINT; THENCE S 08°21'02"E, A DISTANCE OF 60.43' TO A POINT ON THE NORTHERLY RIGHT OF WAY OF DEER PATH RD.; THENCE WITH SAID NORTHERLY RIGHT OF WAY N 30°09'54"E, A DISTANCE OF 84.16' TO A POINT ON THE WESTERLY RIGHT OF WAY OF HILLCREST DR.; THENCE WITH SAID WESTERLY RIGHT OF WAY N 34°18'29"W, A DISTANCE OF 179.62' TO A POINT; THENCE N 00°46'01"W, A DISTANCE OF 174.81' TO THE POINT OF BEGINNING; ALSO BEGINNING AT THE NW CORNER OF LOT 20 OF SAID SUBDIVISION; THENCE S 01°10'39"E, A DISTANCE OF 100.73' TO A POINT; THENCE S 24°40'20"E, A DISTANCE OF 83.40' TO A POINT; THENCE S 01°59'44"E, A DISTANCE OF 125.54' TO A POINT; THENCE S 04°06'42"E, A DISTANCE OF 122.90' TO A POINT; THENCE S 36°19'31"E, A DISTANCE OF 120.00' TO A POINT; THENCE S 08°21'02"E, A DISTANCE OF 60.43' TO A POINT ON THE NORTHERLY RIGHT OF WAY OF DEER PATH RD.; THENCE WITH SAID NORTHERLY RIGHT OF WAY N 30°09'54"E, A DISTANCE OF 84.16' TO A POINT ON THE WESTERLY RIGHT OF WAY OF HILLCREST DR.; THENCE WITH SAID WESTERLY RIGHT OF WAY N 34°18'29"W, A DISTANCE OF 179.62' TO A POINT; THENCE N 00°46'01"W, A DISTANCE OF 174.81' TO THE POINT OF BEGINNING; ALSO BEGINNING AT THE NW CORNER OF LOT 19; THENCE S 21°53'51"W, A DISTANCE OF 108.23' TO A POINT; THENCE S 25°16'53"W, A DISTANCE OF 58.95' TO A POINT; THENCE S 21°53'51"W, A DISTANCE OF 108.23' TO A POINT ON THE SOUTHERLY RIGHT OF WAY OF BEACH RD.; THENCE WITH SAID SOUTHERLY RIGHT OF WAY S 89°59'58"E, A DISTANCE OF 182.71' TO THE POINT OF BEGINNING; ALSO BEING AN EXTENSION OF LOT 20 OF SAID SUBDIVISION COMMENCING AT THE NW CORNER OF SAID LOT 19; THENCE S 21°53'51"E, A DISTANCE OF 108.23' TO A POINT BEING THE NW CORNER OF LOT 20; THENCE WITH A TIE LINE S 63°58'57"W, A DISTANCE OF 29.34' TO THE POINT OF BEGINNING; THENCE WITH THE WESTERLY RIGHT OF WAY OF O-TON-KAH RD. S 25°16'53"W, A DISTANCE OF 50.00' TO A POINT; THENCE S 64°43'07"W, A DISTANCE OF 15.00' TO A POINT ON A MEANDER LINE; THENCE WITH SAID MEANDER LINE N 27°42'49"W, A DISTANCE OF 52.75' TO A POINT; THENCE N 73°38'13"E, A DISTANCE OF 17.45' TO THE POINT OF BEGINNING; ALSO BEING AN EXTENSION OF LOTS 23 AND 24 OF SAID SUBDIVISION, COMMENCING AT THE SW CORNER OF LOT 24; THENCE WITH A TIE LINE S 59°23'54"W, A DISTANCE OF 30.34' TO THE POINT OF BEGINNING; THENCE CONTINUING S 59°23'54"W, A DISTANCE OF 31.64' TO A POINT ON A MEANDER LINE; THENCE WITH SAID MEANDER LINE N 15°20'03"W, A DISTANCE OF 125.89' TO A POINT; THENCE N 78°21'21"E, A DISTANCE OF 30.33' TO A POINT ON THE WESTERLY RIGHT OF WAY OF O-TON-KAH RD.; THENCE WITH SAID WESTERLY RIGHT OF WAY S 11°18'22"W, A DISTANCE OF 60.29' TO A POINT; THENCE S 39°11'38"E, A DISTANCE OF 57.87' TO A POINT; THENCE S 59°26'37"W, A DISTANCE OF 103.33' TO A POINT; THENCE S 36°19'31"E, A DISTANCE OF 78.00' TO A POINT; THENCE S 72°53'00"E, A DISTANCE OF 120.00' TO A POST; THENCE S 86°21'02"E, A DISTANCE OF 60.43' TO A POINT; THENCE N 30°09'54"E, A DISTANCE OF 84.16' TO A POINT; THENCE S 34°18'29"W, A DISTANCE OF 179.62' TO A POINT; THENCE N 00°46'01"W, A DISTANCE OF 174.81' TO A POINT; THENCE S 01°10'39"E, A DISTANCE OF 100.73' TO A POINT; THENCE S 24°40'20"E, A DISTANCE OF 83.40' TO A POINT; THENCE S 01°59'44"E, A DISTANCE OF 125.54' TO A POINT; THENCE S 04°06'42"E, A DISTANCE OF 122.90' TO A POINT; THENCE S 36°19'31"E, A DISTANCE OF 120.00' TO A POINT; THENCE S 08°21'02"E, A DISTANCE OF 60.43' TO A POINT ON THE NORTHERLY RIGHT OF WAY OF DEER PATH RD.; THENCE WITH SAID NORTHERLY RIGHT OF WAY N 30°09'54"E, A DISTANCE OF 84.16' TO A POINT ON THE WESTERLY RIGHT OF WAY OF HILLCREST DR.; THENCE WITH SAID WESTERLY RIGHT OF WAY N 34°18'29"W, A DISTANCE OF 179.62' TO A POINT; THENCE N 00°46'01"W, A DISTANCE OF 174.81' TO THE POINT OF BEGINNING. INCLUDING ALL LANDS BETWEEN THE EXTENSIONS OF LOTS 20, 23 AND 24 AND THE WATERS EDGE OF TURTLE POND. THIS PARCEL OF LAND INCLUDES A TOTAL OF 3.086 ACRES.

SURVEYOR'S CERTIFICATE:

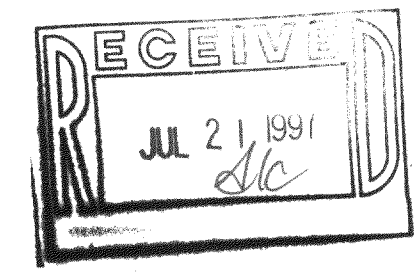
THE ABOVE MAP IS A TRUE REPRESENTATION THEREOF AND SHOWS THE SIZE AND LOCATION OF ALL THE PROPERTY, EXTERIOR BOUNDARIES, THE LOCATION OF ALL VISIBLE BOUNDARY FENCES, APPARENT EASEMENTS, ROADWAYS AND VISIBLE ENCROACHMENTS, IF ANY.

THIS SURVEY IS MADE FOR THE USE OF THE PRESENT OWNERS OF THE PROPERTY, AND ALSO THOSE WHO PURCHASE, MORTGAGE OR GUARANTEE TITLE THERETO WITHIN ONE (1) YEAR FROM DATE HERETO.

[Signature]

BRADFORD L. SPENCER, R.L.S. 2069
RSV#97048.DGN

THIS IS ORIGINAL
PRINT ONLY IF
SEAL IS IMPRINTED
IN RED



RSV ENGINEERING, INC
ENGINEERS, PLANNERS, SURVEYORS
CONSTRUCTION MANAGERS
ENVIRONMENTAL SCIENTISTS
801 MAIN STREET, MUKWONAGO, WISCONSIN 53149 (414) 363-2004

INITIALS	DATE
DESIGN	
DRAWN	JAS 4/4/97
CHECKED	BLS 4/4/97
APPROVED	

BOUNDARY SURVEY
TOWN OF EAST TROY
WALWORTH COUNTY, WISCONSIN

NO.	REVISIONS	BY	DATE	DATE TO	A	B	C	0	1	2	3	4	5

LLOYD S. McINDOE
N. 9257 DEER PATH RD.
EAST TROY, WISCONSIN
PROJ. NO. 97048

SHEET NO.
1
OF
1

POT-1
POT-2
POT-3
POT-4
POT-5
POT-5A
POT-6
POT-6A
POT-50

RSV#97048.DGN 4-18-97

418-1173